

Infrared Thermal Imager  
**Thermo Tracer  
 TH9100 Pro**

**NEC**

**NEW**

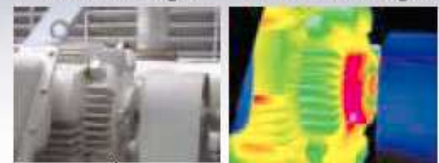
*Features Visual and Thermal Image  
 Composite Function!*

*Easy identification of thermal spots.*

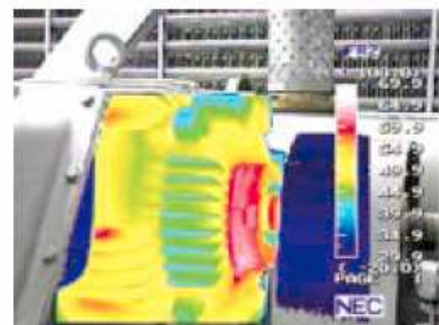


Visual Image

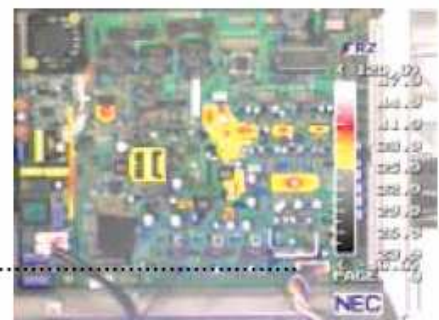
Thermal Image



Composition



**Motor**  
 (composite image)



**Printed Circuit Board**  
 (composite image)

• **New Features**

Infrared/visual image composition  
 High grade silver metallic color body  
 LCD/viewfinder automatically  
 switches on when opened  
 Easy-to-find shaded point cursor  
 Simple deletion of thermal image  
 using thumbnail display  
 File operation available during RUN

• **Operation**

Joystick Control  
 Multilingual Menu  
 Full-auto Function

• **Basic Performance**

Resolution: 0.06° at  
 30° 60Hz (TH9100PMV I)

• **Portable**

Small/lightweight: 1.7kg  
 (including LCD & battery)  
 Battery Operation Time:  
 approx. 150 min \*

• **Robust**

Dust/splash-proof IP54  
 Shock 294m/sec<sup>2</sup>(30G)  
 Vibration 29.4m/sec<sup>2</sup>(3G)

• **Built-in motor drive lens with  
 visual camera:**

Record thermal & visual images  
 simultaneously and display the  
 composition image for easy  
 identification of thermal hotspots.

• **Clear Image**

New reflective/transmissive LCD  
 for use in both bright and low light  
 situations

• **Moving image recordable**

Recording Time  
 Approx. 27 sec (at 60Hz/sec)  
 Approx. 55 sec (at 30Hz/sec)  
 Approx. 166 sec (at 10Hz/sec)



\* at 20°

**NEC San-ei Instruments, Ltd.**

## Specifications

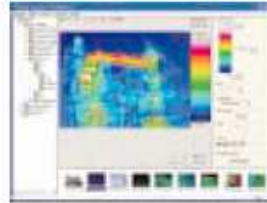
Measuring range	Range 1	TH9100PMV I	TH9100PWV I
	Range 2	-20 to 100°C	-40 to 120°C
	Range 3 (option)	0 to 250°C	0 to 500°C
	Range 4 (option)	100 to 800°C	200 to 2000°C
	Range 4 (option)	200 to 2000°C	—
Resolution	Range 1	0,06°C	0,08°C
		(at 30°C 60Hz)	(at 30°C 60Hz)
		0,02°C	0,03°C
		(at 30°C· 64)	(at 30°C· 64)
Accuracy	±2°C or ±2% of reading whichever greater		
Detector	Uncooled focal plane array (microbolometer)		
Spectral range	8 to 14µm		
I.F.O.V.	1,2mrad		
Focusing range	30cm to infinity		
Field of view	21,7°(H) x 16,4°(V)		
Frame time	60 frames/sec		
Display	View finder and 3,5 inch LCD monitor with auto switch		
Thermal image pixels	320 (H) x 240 (V) pixels		
A/D resolution	14 bits		
Measuring functions	Run/Freeze		
S/N improvement	• 2 • 8 • 16 • 32 • 64 and spatial filter ON/OFF		
Alarm	Screen display and alarm sound (ON/OFF)		
Interval measurement	Recording on built in real time memory : 1/60 to 3600 sec interval		
	Recording on memory card : 5 to 3600 sec interval (thermal image)		
	30 to 3600 sec. (thermal & visual image) Trigger function provided		
Emissivity correction	0,10 to 1,00 (at 0,01 step), Emissivity table provided		
Env. temp. correction	Provided (including interval NUC)		
User setup	Pre-registration of environmental setup (max. 10 setups)		
Background comp.	Provided		
Auto functions	Full automatic (level, sense, focus) Level trace, auto-gain control		
Display functions	Thermal/visual composite image display		
	Display color : color/monochrome, positive/negative		
	Gradation : 16, 32, 64, 128, 256		
	Color palette : rainbow, brightness, shine, hot-iron, medical, line		
	Isothermal band display : max. 4 bands Thumbnail display : 12 thermal images replay Multi-sense display Line-profile : X, Y line profile (waveform display) Multilingual display		
Image processing functions	Variable level/sense		
	Multi-point temperature display (10pts)		
	Multi-point emissivity display (10pts)		
	• 1 display		
	Max/Min (peak hold) temperature display		
	Alarm (full screen or specified box) Digital zoom : 2, 4 times (Run/Freeze) Box setting (max. 5 boxes)		
Annotation	Text and voice annotation (30 sec per image)		
Storage device	Compact flash memory card for; Thermal image in SIT or BMP file format Visual image in SIT or JPEG file format		
Movie recording	Real-time memory : 1664 images (max. 60Hz)		
Video signal output	NTSC/PAL composite video signal, S-video		
Interface	IEEE1394, RS-232C		
Operating temp./humidity	-15 to 50°C, 90% RH or less (not condensed)		
Storage temp./humidity	-40 to 70°C, 90% RH or less (not condensed)		
Power supply	AC adaptor : 100V to 240V, DC 7,2V (nominal)		
Power consumption	Approx. 6W (typ)		
Shock and vibration	294m/sec <sup>2</sup> (IEC60068-2-27), 29,4m/sec <sup>2</sup> (IEC60068-2-6)		
Environmental protection	IP54 (IEC60529)		
Dimensions	Approx. 108 (W) x 113 (H) x 189 (D) mm (excluding projection)		
Weight	Approx. 1,4kg (excluding LCD & battery) Approx. 1,7kg (including LCD & battery)		
Standard accessories	AC adaptor, battery pack (2pcs), battery charger, compact flash memory card, grid belt, neck strap, lens cap, carrying case, viewer software, operation manual		

Specifications are subject to change without prior notice.

## Visual Camera

Pixels	0,41 Mega pixels
Effective image pixels	752 (H) x 480 (V) pixels
Field of view	30,1° (H) x 22,7° (V)
Sensitivity	1 lux
Focusing distance	30cm to infinity
Auto exposure	Provided
Video signal	NTSC/PAL

## Viewer Software



- Thermal image display :
- Thermal image thumbnail (Windows Explorer)
- Thermal image replay
- Image preview
- Setup & Functions :  
Level, Sense, Span, Voice replay,  
Selection of thermal or visual image,  
Color bars, Gradation, Page
- Edit :  
Image save (BMP or JPEG)  
Select folder

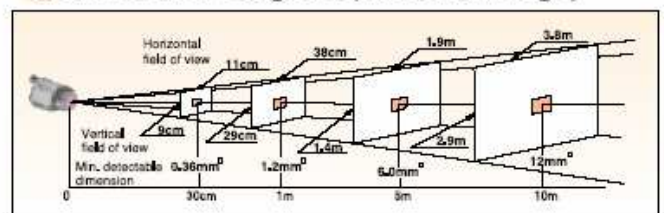
## Options

TH91-390	High temperature range for TH9100MV *1 R3: 100 to 800°C. R4: 200 to 2000°C
TH91-392	High temperature range for TH9100WV *1 R3: 200 to 2000°C
TH91-313	USB Interface with TH91-737 remote program *1
TH91-382	Telephoto lens (x2) 10,9°(H) x 8,2°(V) with visual camera
TH91-383	Wide angle lens 42,0°(H) x 32,1°(V) with visual camera
TH91-386	Close-up lens, 95µm, 30mm(H) x 22mm(V) W.D. 75mm
TH91-385	Close-up lens, 37µm, 11mm(H) x 8mm(V) W.D. 13mm
TH91-387	External lens adaptor for TH71-344A wide angle lens, TH71-377/378 close up lenses
TH71-464	Rechargeable battery pack (Li-ion) 7,2V 1800mAh
TH71-340	Battery charger for 100/110V (2 battery slots)
TH71-339	Battery charger for 220/240V (2 battery slots)
TH71-334	AC adaptor (100/110V AC)
TH71-360	AC adaptor (110V AC) UL
TH71-359	AC adaptor (220/240V AC) CE
TH71-347	LCD remote controller (TH91-347-L connecting cable is required)
TH91-375	Remote controller
TH91-347-L05	5m cable for LCD remote controller TH71-347
TH91-347-L10	10m cable for LCD remote controller TH71-347
TH91-347-L15	15m cable for LCD remote controller TH71-347
TH91-347-L20	20m cable for LCD remote controller TH71-347
TH91-349	RS232C Cable
TH91-348	S-video cable
TH91-713	Report Generator Software *2
TH91-711	Image Processor Software (TH91-713 is required) *2
TH91-712	Image Processor Pro Software *2
TH71-717	IEEE1394 Data Capture Software *2
MikroSpec	Thermal Imaging Software *2
MikroSpec R/T	Real-Time Thermal Data Acquisition & Analysis Software *2
irMotion	Recorder, Trigger and Measurement Software *2
Trigger Box	Trigger box for irMotion

\*1 Specify these options when ordering the main unit (TH9100MV/WV)

\*2 Compatible with the Microsoft Windows 2000 professional, Windows XP

## Field of View Diagram (Thermal image)



**CAUTION  
FOR SAFETY**

Please read "WARNING" & "CAUTION" in the operation manual attached to the product carefully for proper operation before using the product.



**AIR SYSTEMS® s.r.l.**

SISTEMI E SERVIZI AERONAUTICI E MARINI - CONSULENZE

Via Is Mirronis, 118 - 09122 CAGLIARI - ITALY

Tel./Fax [+39] 070 270 243

E-mail: info@airsystems.it

<http://www.airsystems.it>

P. IVA 02015010925